



STUDIO, 1, 2 & 3 BEDROOM LUXURY APARTMENT HOMES

FEATURES & AMENITIES

- Nine-Foot Ceilings | Gourmet Kitchens with Whirlpool Appliances | Ceiling Fans in Living Room | Fireplaces* | High-Speed Internet Ready | Double Stainless Steel Sinks | Breakfast Bars | Separate Dining Areas | Private Patios* | Track Lighting in Dining Areas | Full-Size Washers and Dryers | Health and Wellness Center | Executive Business Center | Resort-Style Pool | Clubhouse and Poolside Wi-Fi Access | Picnic Areas with Grills | Car Care Center | Parking Decks and Covered Parking Available | Storage Space Available | 24-Hour Service Guarantee | Pet Friendly

* In Select Homes



CLOSE TO IT ALL



CITY VISTA

A PREFERRED APARTMENT | COMMUNITYSM



412.921.1040

325 Elizabeth Drive | Pittsburgh, PA 15220

CityVistaApts.com

LIVE, WORK, RELAX



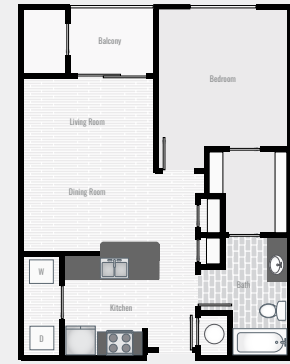
City Vista is for those who desire convenience and a beautiful array of services in the best location in town!

You'll love calling City Vista home! Our distinct community features studio, one, two and three bedroom apartment homes. Generous living spaces give you the freedom to design and customize your home. Enjoy entertaining your friends and family in a gourmet kitchen with designer appliances and finishes.

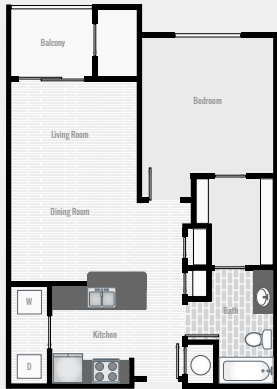
City Vista is a one-of-a-kind experience you simply won't want to miss!



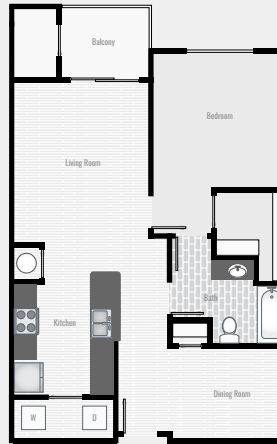
A1 Studio | 1 BA | 600 SF



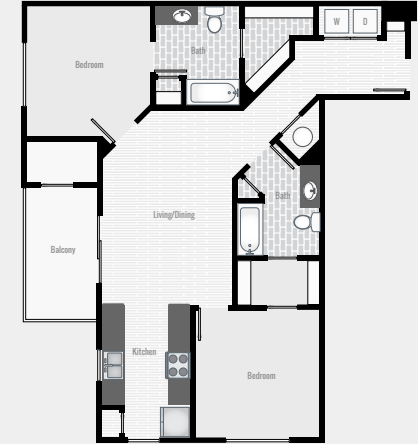
A2 1 BR | 1 BA | 751 SF



A3 1 BR | 1 BA | 786 SF



A4 1 BR | 1 BA | 872 SF



B1 2 BR | 2 BA | 1,088 SF



B2 2 BR | 2 BA | 1,109 SF



B3 2 BR | 2 BA | 1,201 SF



C1 3 BR | 2 BA | 1,360 SF